

Proposed Transmission Routes from Levy Plant to Brooksville West Substation in Hernando County

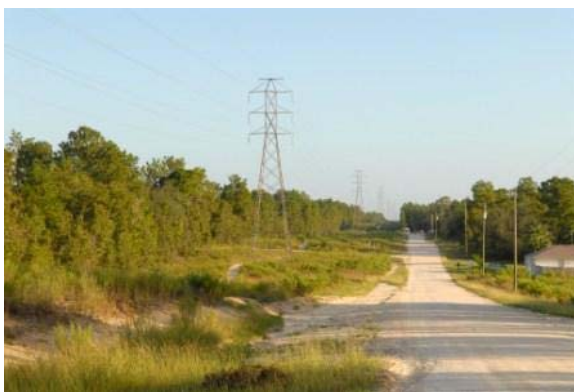
These 230- and 500-kilovolt (kV) transmission lines will traverse about 60 miles through Levy, Citrus and Hernando counties. The majority of the proposed route will follow the path of the existing transmission line corridor.

- **Four new 500-kV Lines** - New rights of way will be needed for nine miles between the proposed nuclear plant and the area near the proposed Citrus substation. Approximately 4.5 miles of this will be on property owned by PEF.
 - Rights-of-way may be up to 705 feet wide, to accommodate four 500-kV lines
 - Progress Energy may need to purchase up to five homes in this area, depending on the selected route. The company has contacted the homeowners who could be affected.
 - Typical heights of the 500-kV transmission structures will range from 120 to 175 feet above ground
 - Progress Energy is working with state conservation officials for the lines to cross Inglis Island
 - This path would minimize the lines' impacts on nearby homes
 - The existing double circuit transmission line in this section will remain
 - One of the 500-kV lines will continue on to the Crystal River Plant in existing rights of way
 - Two of the 500-kV lines will connect into the proposed new substation
 - One of the 500-kV lines will turn and go east into Marion and Sumter Counties

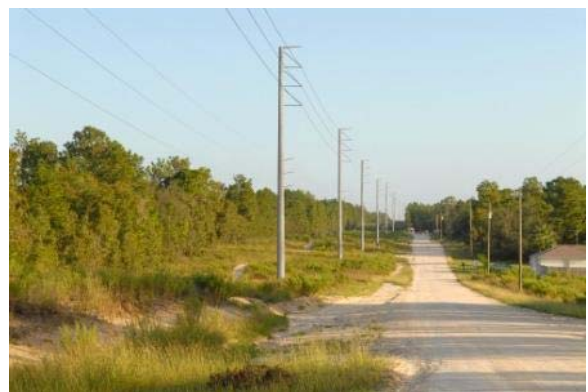
- **230-kV Line** – About 41 miles from Crystal River Energy Complex to Brooksville West Substation in Hernando County
 - We expect to be able to stay in our existing rights of way through most of Citrus and Hernando counties
 - The existing 115-kV line will be rebuilt to accommodate the new 230-kV line
 - The existing wood poles and lattice structures will be removed and replaced with single structures
 - The existing 115-kV line will be built under the new 230-kV line on the new structure (see photo simulation below)
 - Typically, heights of the new 230-kV transmission structures will range from 90 to 150 feet above ground
 - In a small area northwest of Progress Energy's existing Brookridge Substation, Progress Energy may need to acquire new or expand existing rights of way. The expansion will not impact the Brookridge Subdivision and will not require the purchase of homes in this area
 - Along Sunshine Grove Road north of SR 50, a Hernando County road widening project will require Progress Energy to relocate the existing 115kV line less than 25 feet to the east. This relocation will occur between 2009 and 2010. At that time new structures will be built to accommodate the new 230kV line which will be added at a later date.

* Pole heights may be taller when crossing roads, water or other electrical equipment

Current 230-kV Construction



Example of New 230-kV Construction



(Photos of 500-kV construction available – ask a representative)