

24.01 TRANSFORMERS  
 ABSORPTION BED FOR TRANSFORMER PADS . . . . . 24.01-01  
 SINGLE-PHASE TRANSFORMER PAD FOR 25-167 KVA . . . . . 24.01-07  
 THREE-PHASE TRANSFORMER PAD FOR 75-300 KVA . . . . . 24.01-09  
 THREE-PHASE TRANSFORMER PAD FOR 500-3000 KVA  
 AND PAD-MOUNTED CAPACITOR . . . . . 24.01-11  
 ADAPTER PLATE FOR THREE-PHASE TRANSFORMER PAD FOR 500-3000KVA . . . . . 24.01-13


24.03 ENCLOSURES  
 THREE-PHASE SECONDARY ENCLOSURE PAD . . . . . 24.03-01  
 THREE-PHASE SECONDARY ENCLOSURE MOUNTING BOX  
 (SMALL SPLICE BOX) (24" X 43" X 18") . . . . . 24.03-03

24.05 SWITCHGEAR  
 MOUNTING BOX FOR PME 9, 10, 11 & AUTO TRANSFER . . . . . 24.05-01  
 MOUNTING BOX FOR PME 4 (200 & 600 AMP) . . . . . 24.05-03  
 MOUNTING BOX PMH 9, 10 & 11, AUTO TRANSFER & TRAYER 9, 10 & 11 . . . . . 24.05-05  
 MOUNTING BOX FOR COOPER 15KV VFI-5 . . . . . 24.05-07  
 MOUNTING BOX FOR 15 KV, 12.5 KA, VISTA AND NEXT GENERATION VISTA . . . . . 24.05-09  
 ➤ CABLE AND CONDUIT PLACEMENT FOR TRAYER ATS VFI . . . . . 24.05-11

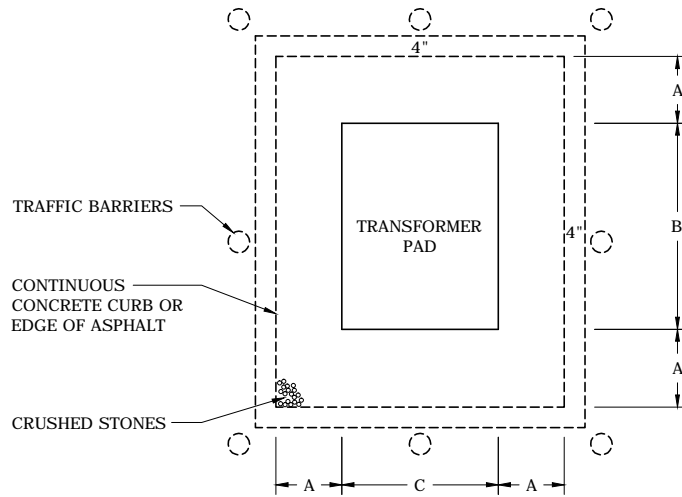
24.07 PULL BOXES  
 SMALL PULL & SPLICE BOX (30" X 48" X 24") . . . . . 24.07-01  
 LIDS FOR SMALL PULL & SPLICE BOX . . . . . 24.07-03  
 LARGE PULL BOX, BOTTOM HALF (6.5' X 4' X 2') . . . . . 24.07-07  
 LARGE PULL BOX, TOP HALF (6.5' X 4' X 3') . . . . . 24.07-09  
 STEEL LIDS FOR LARGE PULL BOX . . . . . 24.07-11  
 CONCRETE LIDS FOR LARGE PULL BOX . . . . . 24.07-13  
 LARGE PULL BOX ASSEMBLY . . . . . 24.07-15

3				
2				
1	5/24/12	KATIGBAK	BURLISON	ELKINS
0	10/4/10	CECCONI	GUINN	ELKINS
REVISED	BY	CK'D	APPR.	

SECTION 24 - PADS, PULL BOXES  
 TABLE OF CONTENTS



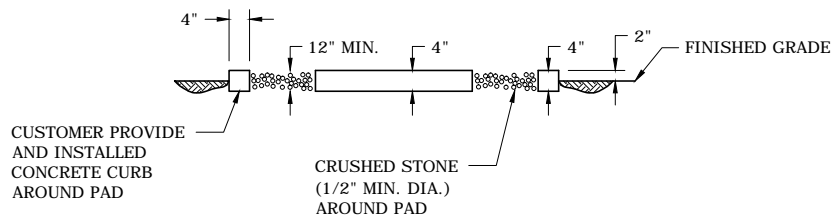
**FLA**      DWG.  
 24.00-00A



PLAN VIEW

PHASE	TRANSFORMER KVA	A	B	C	APPROXIMATE WEIGHT/LBS
1Ø	ALL	12"	45"	40"	470
3Ø	75-300	18"	60"	75"	2150
3Ø	500-3000	28"	82"	87"	3000

CURBING AND ABSORPTION BED ARE REQUIRED WHEN TRANSFORMER IS LOCATED IN OR IMMEDIATELY ADJACENT TO PAVEMENT, NEAR BODIES OR WATER, STORM DRAINS, RETENTION AREAS, OR LOCATIONS WHERE OIL RUNOFF IS LIKELY TO ENTER WATER, STORM OR SEWER SYSTEMS.



TRAFFIC BARRIERS ARE TO BE USED WHEN TRANSFORMER IS EXPOSED TO VEHICLE TRAFFIC. SEE DWG. 27.06-06 FOR TRAFFIC BARRIER DETAILS.

NOTES:

1. ALL UNDERGROUND FACILITIES MUST BE LOCATED PRIOR TO INSTALLATION OF TRAFFIC BARRIERS.

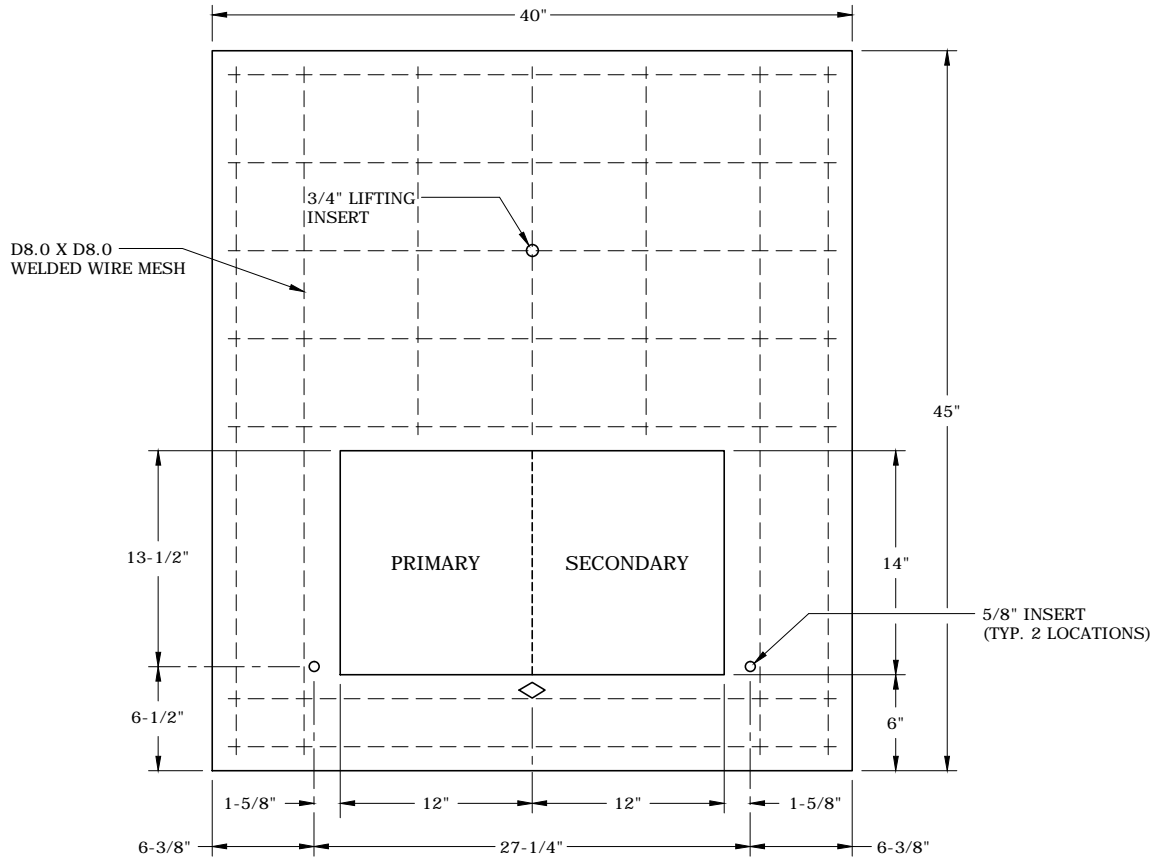
3				
2				
1				
0	10/4/10	DANNA	GUINN	ELKINS
REVISED	BY	CK'D	APPR.	

ABSORPTION BED FOR TRANSFORMER PADS

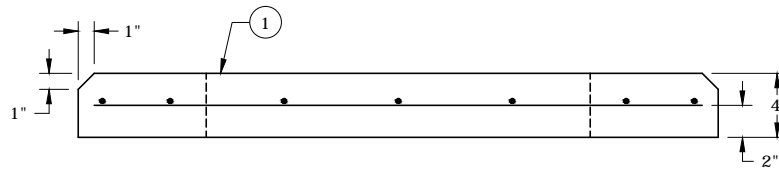


**FLA**

DWG.  
24.01-01



PLAN VIEW



SIDE VIEW

BILL OF MATERIALS						
MACRO UNIT	CU ITEM NO.	COMPATIBLE UNIT	QTY REQ'D	CATALOG NUMBER	QTY PER CU	DESCRIPTION
-	1	PAD1P40X45CF	1	327703	1	25 - 167 KVA SINGLE-PHASE PAD

NOTES:

1. THE GROUND SHALL BE LEVELED AND THOROUGHLY COMPACTED BEFORE PAD IS INSTALLED.
2. USE FIRE ANT CONTROL UNDER ENTIRE PAD INCLUDING PAD OPENINGS.
3. MAINTAIN CLEARANCES PER DWG. 27.06-05.
4. CUT OFF ALL CONDUITS FLUSH WITH TOP OF PAD AND CAP CONDUIT.
5. SOD MAY BE REQUIRED AROUND PAD TO PREVENT SOIL EROSION.

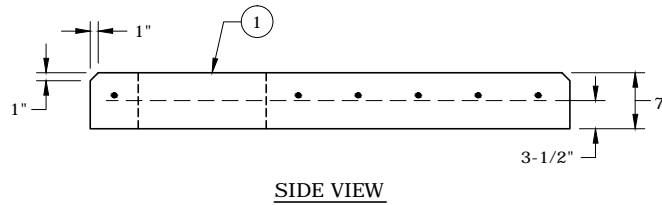
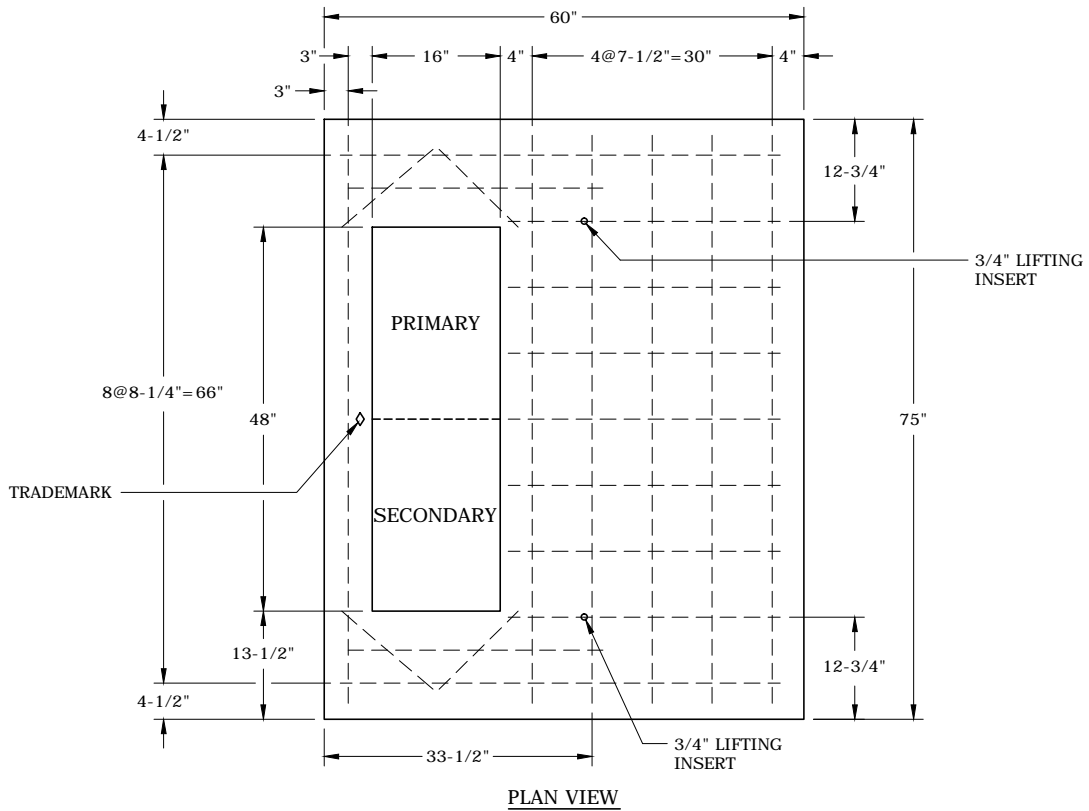
3				
2				
1				
0	10/4/10	DANNA	GUINN	ELKINS
REVISED	BY	CK'D	APPR.	

SINGLE-PHASE TRANSFORMER PAD  
FOR 25 - 167 KVA



FLA

DWG.  
24.01-07



BILL OF MATERIALS						
MACRO UNIT	CU ITEM NO.	COMPATIBLE UNIT	QTY REQ'D	CATALOG NUMBER	QTY PER CU	DESCRIPTION
-	1	▶ PAD3P60X75CF	1	327707	1	60" X 75" 75 - 300 KVA THREE-PHASE PAD

**NOTES:**

1. THE GROUND SHALL BE LEVELED AND THOROUGHLY COMPACTED BEFORE PAD IS INSTALLED.
2. USE GENEROUS AMOUNT OF FIRE ANT KILLER UNDER ENTIRE PAD.
3. MAINTAIN CLEARANCES PER DWG. 27.06-05.
4. CUT OFF ALL CONDUITS FLUSH WITH TOP OF PAD AND CAP CONDUIT.
5. SOD MAY BE REQUIRED AROUND PAD TO PREVENT SOIL EROSION.

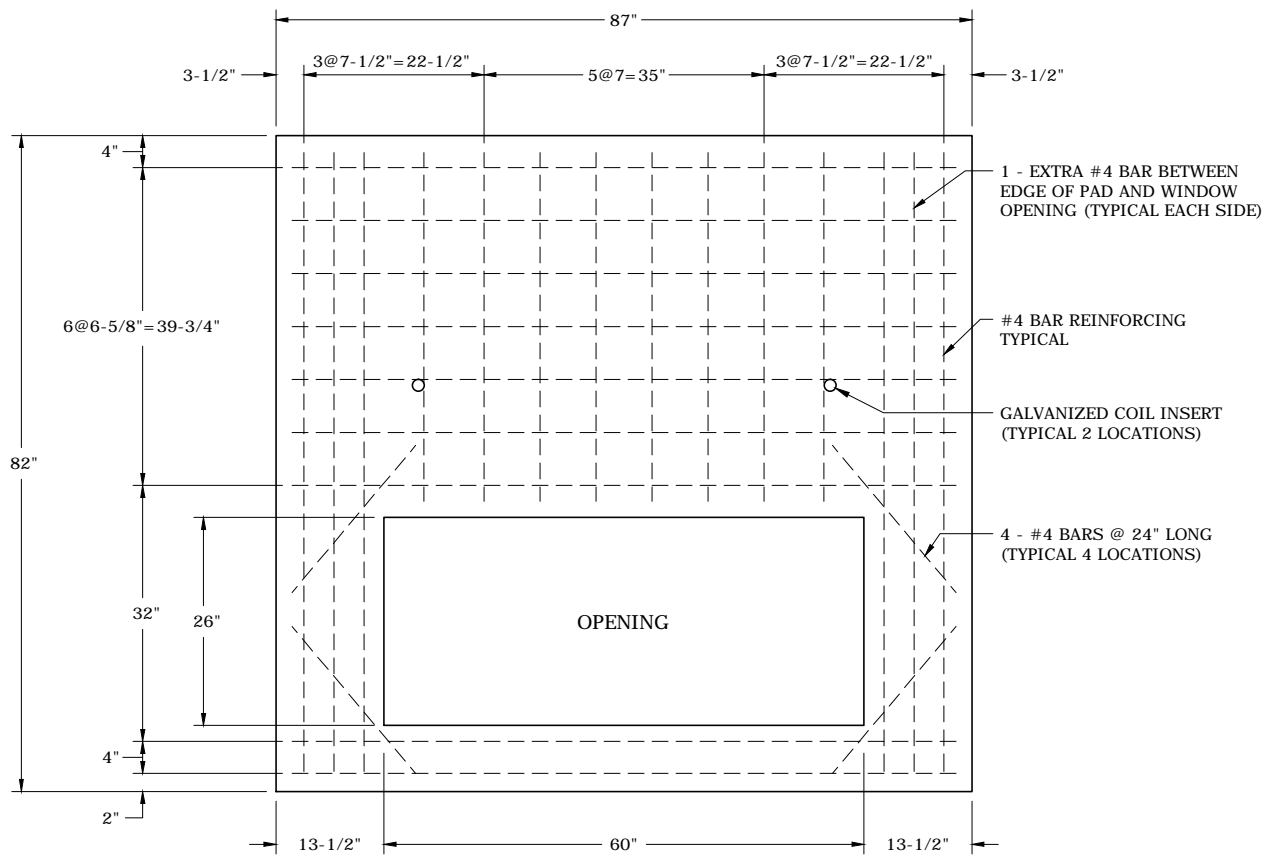
3				
2				
1	7/9/13	KATIGBAK	GUINN	ADCOCK
0	10/4/10	DANNA	GUINN	ELKINS
REVISED	BY	CK'D	APPR.	

**THREE-PHASE TRANSFORMER  
PAD FOR 75-300 KVA**

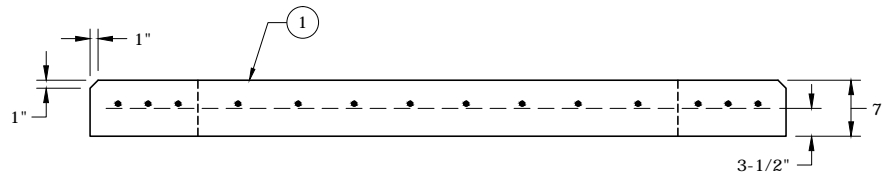


**FLA**

DWG.  
24.01-09



PLAN VIEW



SIDE VIEW

BILL OF MATERIALS						
MACRO UNIT	CU ITEM NO.	COMPATIBLE UNIT	QTY REQ'D	CATALOG NUMBER	QTY PER CU	DESCRIPTION
-	1	PAD3P82X87CF	1	327712	1	82" X 87" 500 - 3000 KVA 3 PH. PAD

NOTES:

1. THE GROUND SHALL BE LEVELED AND THOROUGHLY COMPACTED BEFORE PAD IS INSTALLED.
2. USE FIRE ANT CONTROL UNDER ENTIRE PAD INCLUDING PAD OPENINGS.
3. MAINTAIN CLEARANCES PER DWG. 27.06-05.
4. CUT OFF ALL CONDUITS FLUSH WITH TOP OF PAD AND CAP CONDUIT.
5. SOD MAY BE REQUIRED AROUND PAD TO PREVENT SOIL EROSION.

3				
2				
1				
0	10/4/10	DANNA	GUINN	ELKINS
REVISED	BY	CK'D	APPR.	

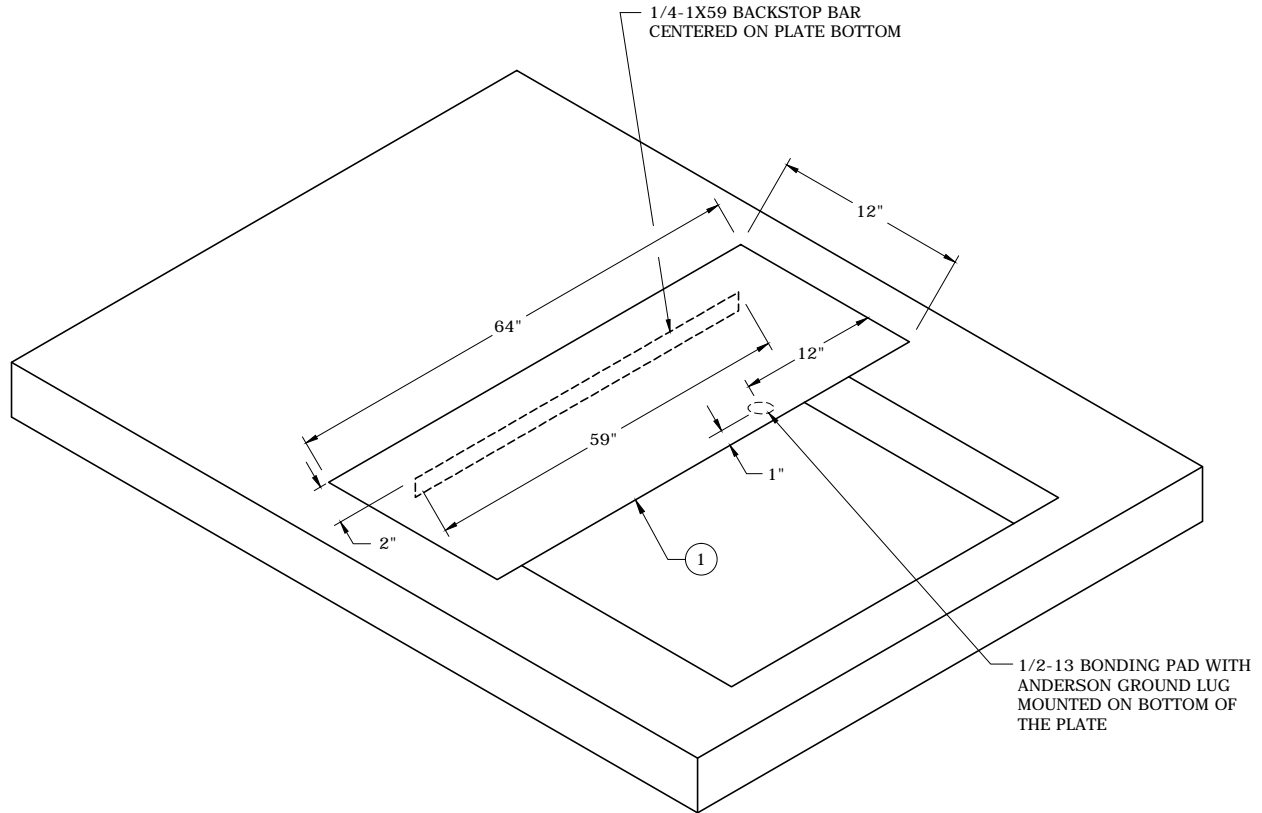
THREE-PHASE TRANSFORMER  
PAD FOR 500-3000 KVA  
AND PAD-MOUNTED CAPACITOR



FLA

DWG.  
24.01-11

12 GAUGE 304L SS PLATE IS TO BE USED AS AN ADAPTER PLATE FOR USE WITH 18" DEEP CABINET TRANSFORMER DESIGNS WITH THE LARGE 500-3000KVA PADMOUNT CONCRETE PAD.



BILL OF MATERIALS

MACRO UNIT	CU ITEM NO.	COMPATIBLE UNIT	QTY REQ'D	CATALOG NUMBER	QTY PER CU	DESCRIPTION
-	1	PADADAPTERLTF	1	9220119264	1	64" X 12" TRANSFORMER PAD ADAPTER PLATE

NOTES:

1. USE ADAPTER PLATE TO REDUCE PAD OPENING AS NEEDED WHEN INSTALLING TRANSFORMER WITH 18" DEEP CABINET.
2. GROUND ADAPTER PLATE WITH #4 BC USING GROUND LUG INSTALLED ON BOTTOM.
3. PLACE ADAPTER PLATE IN PAD OPENING WITH BACKSTOP AGAINST THE REAR OF THE OPENING AS SHOWN.

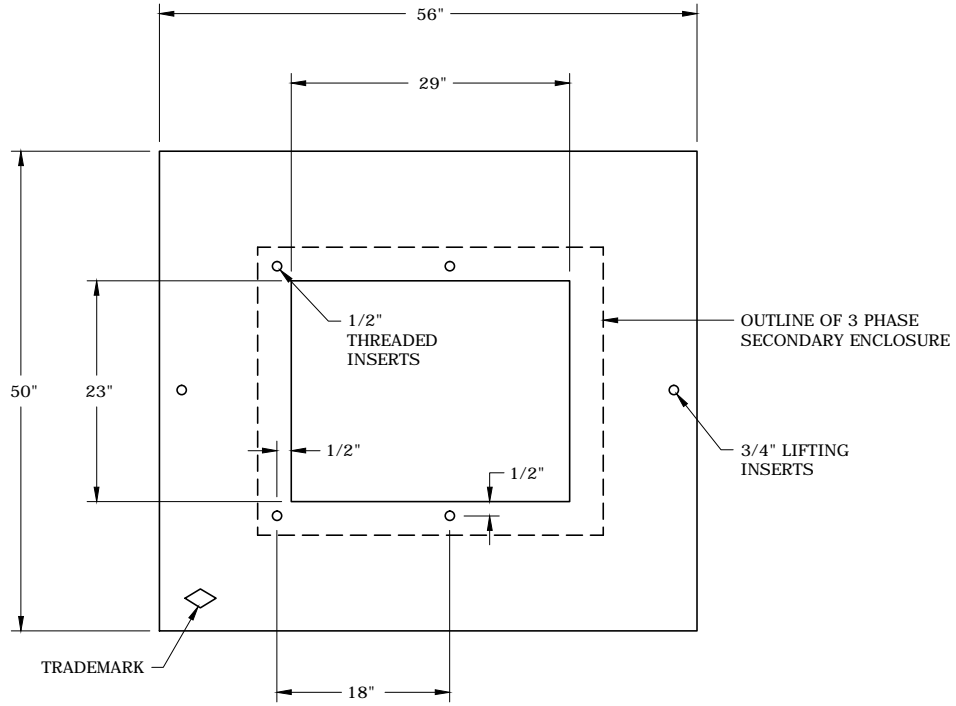
3				
2				
1				
0	10/4/10	DANNA	GUINN	ELKINS
REVISED	BY	CK'D	APPR.	

ADAPTER PLATE FOR THREE-PHASE  
TRANSFORMER PAD FOR 500-3000 KVA

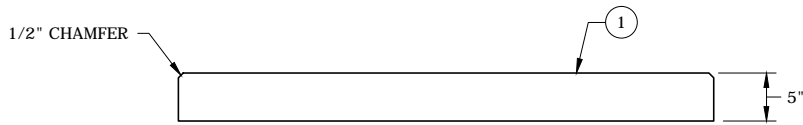


FLA

DWG.  
24.01-13



PLAN VIEW



SIDE VIEW

BILL OF MATERIALS						
MACRO UNIT	CU ITEM NO.	COMPATIBLE UNIT	QTY REQ'D	CATALOG NUMBER	QTY PER CU	DESCRIPTION
-	1	PADS50X56CF	1	327704	1	50" X 56" SECONDARY ENCLOSURE PAD

NOTES:

1. THE GROUND SHALL BE LEVELED AND THOROUGHLY COMPACTED BEFORE PAD IS INSTALLED.
2. USE FIRE ANT CONTROL UNDER ENTIRE PAD INCLUDING PAD OPENINGS.
3. MAINTAIN 8' CLEARANCE FROM FRONT AND REAR DOORS AND 3' FROM SIDES.
4. CUT OFF ALL CONDUITS FLUSH WITH TOP OF PAD AND CAP CONDUIT.
5. SOD MAY BE REQUIRED AROUND PAD TO PREVENT SOIL EROSION.

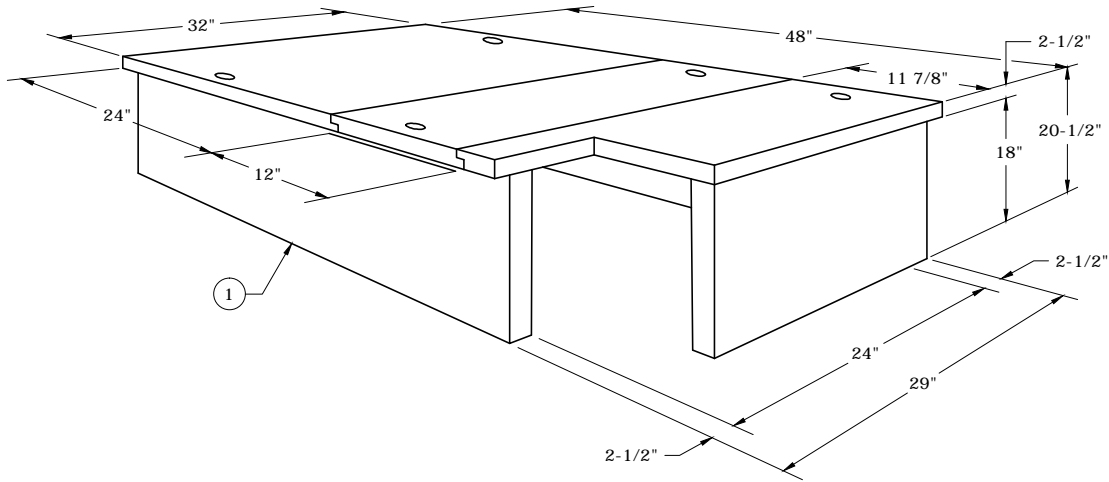
3				
2				
1				
0	10/4/10	DANNA	GUINN	ELKINS
REVISED	BY	CK'D	APPR.	

THREE-PHASE SECONDARY ENCLOSURE PAD



**FLA**

DWG.  
24.03-01



BILL OF MATERIALS						
MACRO UNIT	CU ITEM NO.	COMPATIBLE UNIT	QTY REQ'D	CATALOG NUMBER	QTY PER CU	DESCRIPTION
-	1	PADTMT48X32CF	1	320154	1	BOX
				320162	1	12.875" X 32" LID
				320166	1	24" X 32" LID

**NOTES:**

1. BELOW GRADE INSTALLATION REQUIRES ELECTRONIC POWER MARKER.
2. WHEN USED AS A SPLICE BOX, USE 1/0 PRIMARY CONDUCTOR MAXIMUM.
3. CAN BE USED AS THREE-PHASE SECONDARY ENCLOSURE MOUNTING BOX. SEE DWG. 25.03-01.
4. CAN BE USED AS A SINGLE-PHASE TRANSFORMER MOUNTING BOX.
5. CUT OFF CONDUITS (IF PRESENT) 6" ABOVE BOTTOM OF BOX AND CAP.
6. DO NOT FILL INTERIOR OF BOX WITH SOIL.
7. USE FIRE ANT CONTROL UNDER ENTIRE PAD INCLUDING PAD OPENINGS.

3				
2				
1				
0	8/10/10	DANNA	GUINN	ELKINS
REVISED	BY	CK'D	APPR.	

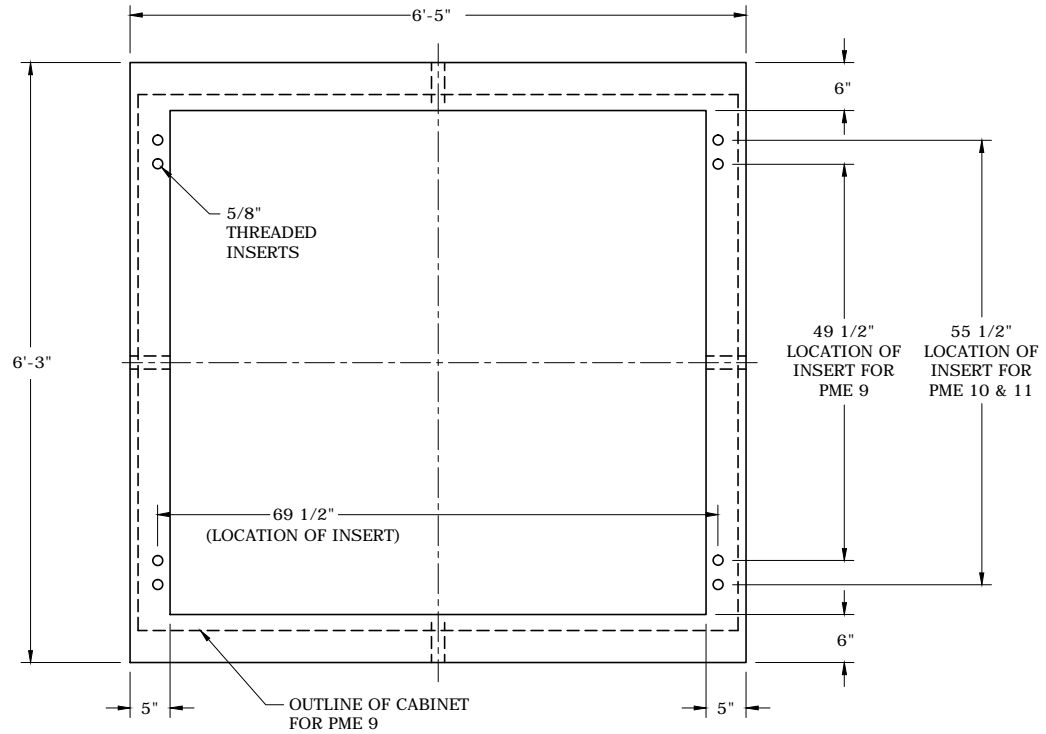
**THREE-PHASE SECONDARY ENCLOSURE  
 MOUNTING BOX (SMALL SPLICE BOX)**  
 (24" X 43" X 18")



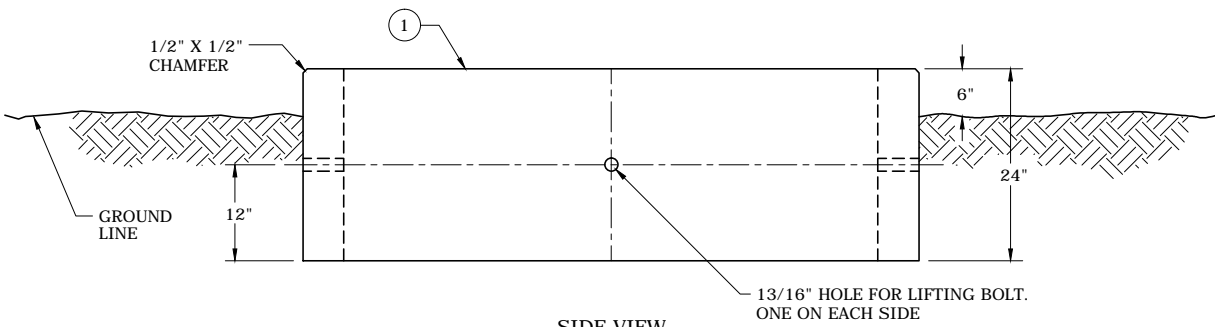
**FLA**

DWG.  
24.03-03





PLAN VIEW



SIDE VIEW

**BILL OF MATERIALS**

MACRO UNIT	CU ITEM NO.	COMPATIBLE UNIT	QTY REQ'D	CATALOG NUMBER	QTY PER CU	DESCRIPTION
-	1	PADSWGCPME9F	1	327723	1	BOX, FOR MOUNTING PME GEAR

NOTES:

1. THE GROUND SHALL BE LEVELED AND THOROUGHLY COMPACTED BEFORE PAD IS INSTALLED.
2. USE FIRE ANT CONTROL UNDER ENTIRE PAD INCLUDING PAD OPENINGS.
3. MAINTAIN 10' CLEARANCE FROM FRONT AND REAR DOORS AND 3' FROM SIDES.
4. CUT OFF ALL CONDUITS 6" ABOVE BOTTOM OF BOX AND CAP.
5. DO NOT FILL INTERIOR OF BOX WITH SOIL.
6. SOD MAY BE REQUIRED AROUND PAD TO PREVENT SOIL EROSION.
7. TO DEFER SWITCH INSTALLATION, USE LID ( CN 327375).

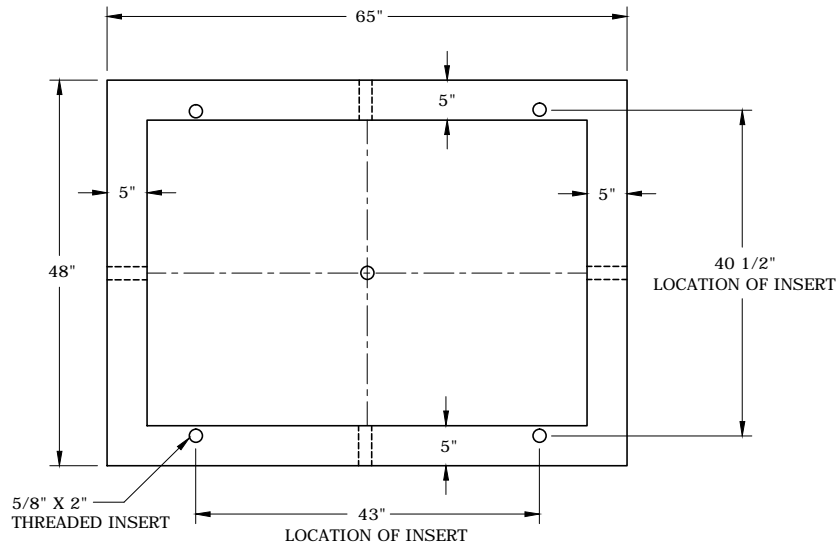
3				
2				
1				
0	10/4/10	DANNA	GUINN	ELKINS
REVISED	BY	CK'D	APPR.	

MOUNTING BOX FOR PME 9, 10, 11  
& AUTO TRANSFER

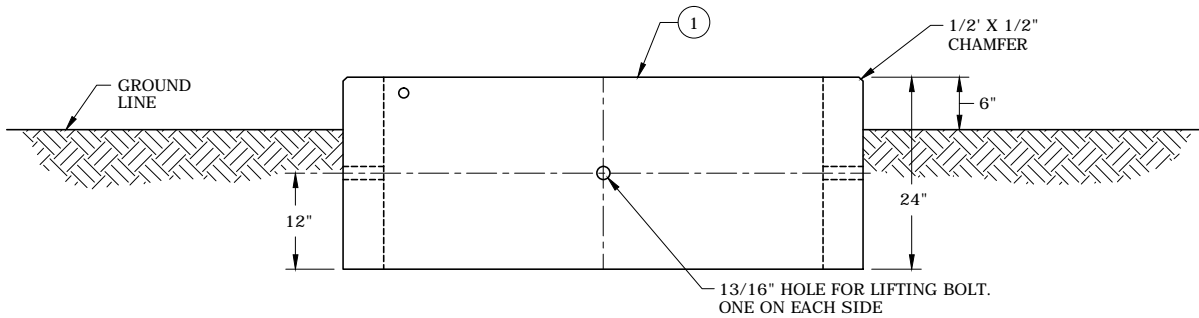


**FLA**

DWG.  
24.05-01



PLAN VIEW



SIDE VIEW

BILL OF MATERIALS						
MACRO UNIT	CU ITEM NO.	COMPATIBLE UNIT	QTY REQ'D	CATALOG NUMBER	QTY PER CU	DESCRIPTION
-	1	PADSWGCPME4F	1	327724	1	BOX, MOUNTING ALL PME-4

NOTES:

1. THE GROUND SHALL BE LEVELED AND THOROUGHLY COMPACTED BEFORE PAD IS INSTALLED.
2. USE FIRE ANT CONTROL UNDER ENTIRE PAD INCLUDING PAD OPENINGS.
3. MAINTAIN 10' CLEARANCE FROM FRONT AND REAR DOORS AND 3' FROM SIDES.
4. CUT OFF ALL CONDUITS 6" ABOVE BOTTOM OF BOX AND CAP.
5. DO NOT FILL INTERIOR OF BOX WITH SOIL.
6. SOD MAY BE REQUIRED AROUND PAD TO PREVENT SOIL EROSION.

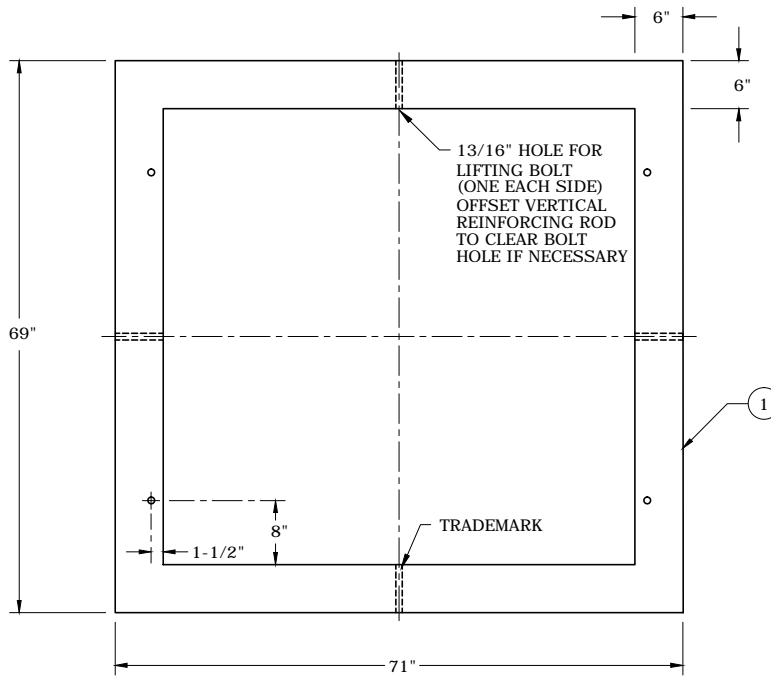
3				
2				
1				
0	10/4/10	DANNA	GUINN	ELKINS
REVISED	BY	CK'D	APPR.	

MOUNTING BOX FOR PME 4 (200 & 600 AMP)

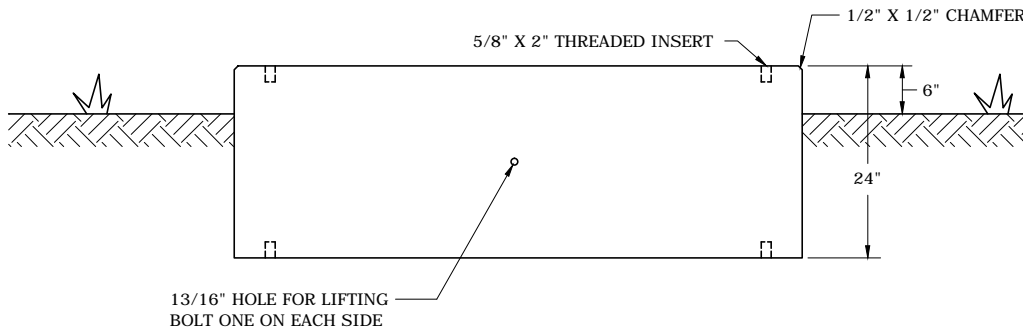


**FLA**

DWG.  
24.05-03



PLAN VIEW



SIDE VIEW

BILL OF MATERIALS

MACRO UNIT	CU ITEM NO.	COMPATIBLE UNIT	QTY REQ'D	CATALOG NUMBER	QTY PER CU	DESCRIPTION
-	1	PADSWGCPMHF	1	152199	1	BOX, MOUNTING PMH SWITCHGEAR

NOTES:

1. THE GROUND SHALL BE LEVELED AND THOROUGHLY COMPACTED BEFORE PAD IS INSTALLED.
2. USE FIRE ANT CONTROL UNDER ENTIRE PAD INCLUDING PAD OPENINGS.
3. MAINTAIN 10' CLEARANCE FROM FRONT AND REAR DOORS AND 3' FROM SIDES.
4. CUT OFF ALL CONDUITS 6" ABOVE BOTTOM OF BOX AND CAP.
5. DO NOT FILL INTERIOR OF BOX WITH SOIL.
6. SOD MAY BE REQUIRED AROUND PAD TO PREVENT SOIL EROSION.
7. TO DEFER SWITCH INSTALLATION, USE LID ( CN 327381).
8. OLD 70" X 62" PADS MAY BE USED.
9. APPROXIMATE WEIGHT IS 3150 LBS.

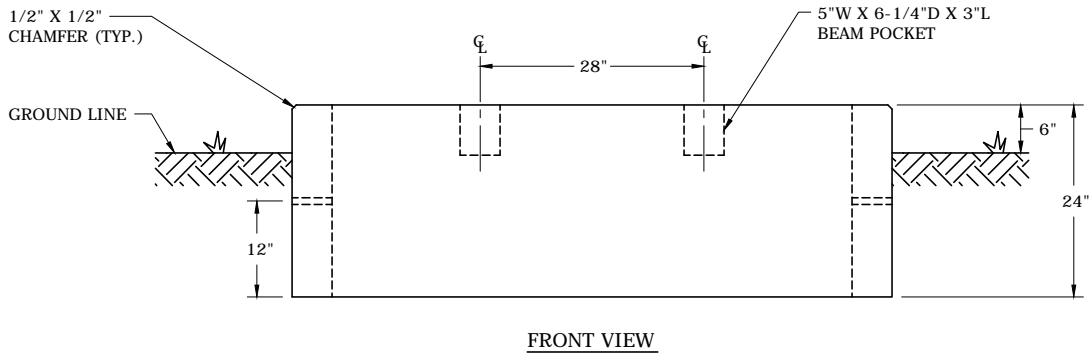
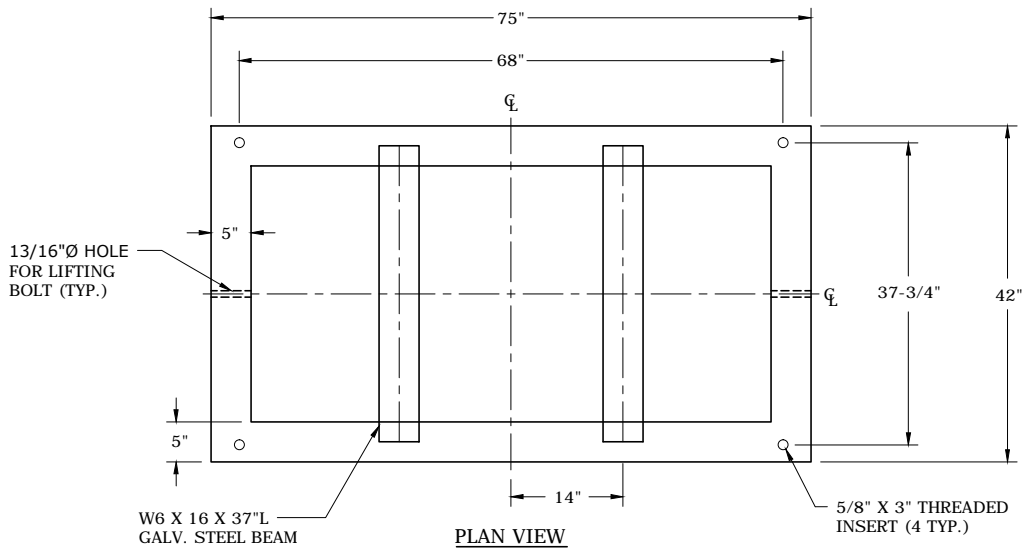
3				
2				
1				
0	10/4/10	DANNA	GUINN	ELKINS
REVISED	BY	CK'D	APPR.	

MOUNTING BOX PMH 9, 10 & 11,  
 AUTO TRANSFER & TRAYER 9, 10 & 11



FLA

DWG.  
 24.05-05



BILL OF MATERIALS				
ITEM NO.	COMPATIBLE UNIT	CATALOG NUMBER	QUANTITY	DESCRIPTION
1	PADSWGCVFIF	9220109880	1	MOUNTING BOX

**NOTES:**

1. THE GROUND SHALL BE LEVELED AND COMPACTED TO THAT OF UNDISTURBED EARTH BEFORE MOUNTING BOX IS INSTALLED. SOIL AROUND THE MOUNTING BOX IS TO BE FREE OF ROOTS AND CONSTRUCTION DEBRIS TO PREVENT SETTLING.
2. USE FIRE ANT CONTROL UNDER ENTIRE PAD INCLUDING PAD OPENINGS.
3. MAINTAIN 8' CLEARANCE FROM THE FRONT AND REAR DOORS AND 3' FROM THE SIDES.
4. CUT OFF ALL CONDUITS 6" ABOVE THE BOTTOM OF BOX AND CAP.
5. DO NOT FILL INTERIOR OF THE BOX WITH SOIL.
6. SOD MAY BE REQUIRED AROUND THE PAD TO PREVENT SOIL EROSION.
7. OTHER UTILITIES ARE NOT TO BE INSTALLED UNDER THE BOX PAD.
8. APPROXIMATE WEIGHT IS 2275 LBS.
9. SEE DWG. 28.06-07A AND 28.06-07B FOR COOPER 15KV VFI-5.

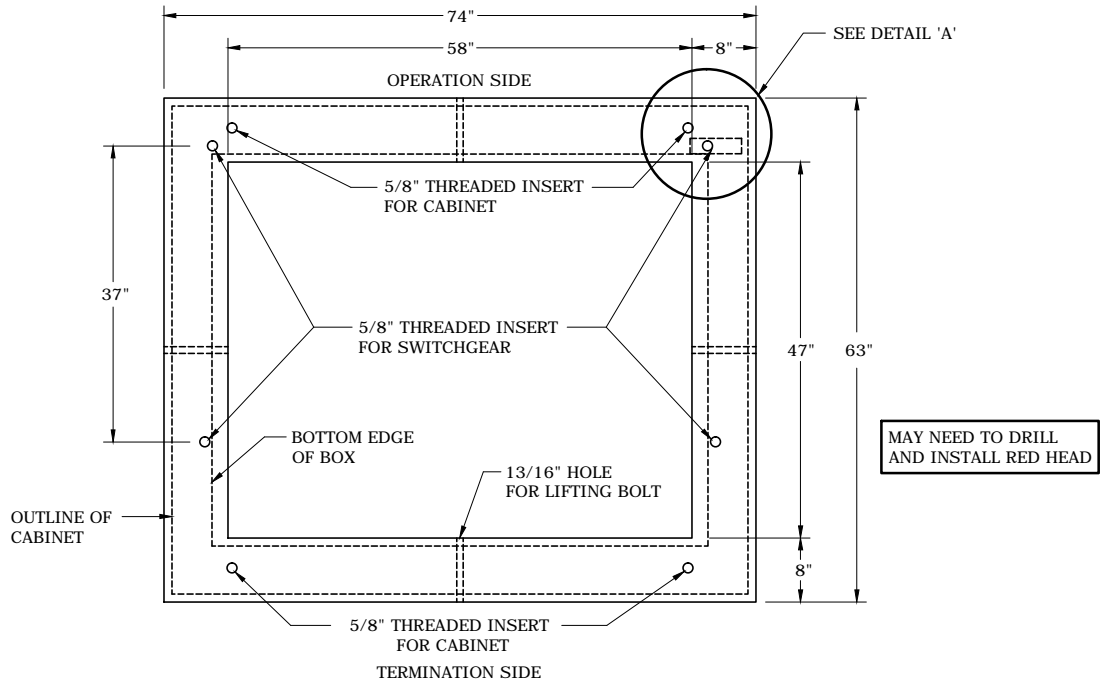
3				
2				
1				
0	10/4/10	DANNA	GUINN	ELKINS
REVISED	BY	CK'D	APPR.	

MOUNTING BOX FOR  
COOPER 15KV VFI-5

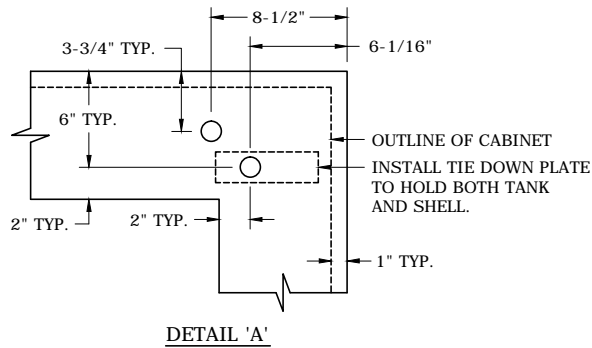
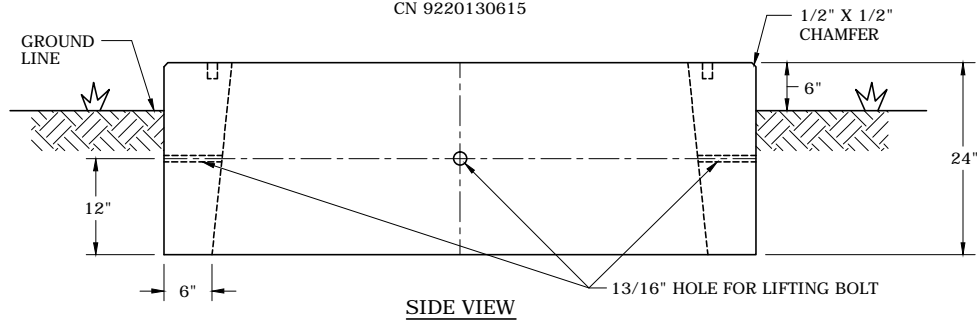


**FLA**

DWG.  
24.05-07



**PLAN VIEW**  
PADSWGCVISTAF  
CN 9220130615



**NOTES:**

1. THE GROUND SHALL BE LEVELED AND THOROUGHLY COMPACTED BEFORE BOX IS INSTALLED.
2. USE FIRE ANT CONTROL UNDER ENTIRE PAD INCLUDING PAD OPENINGS.
3. MAINTAIN 10' CLEARANCE FROM FRONT AND REAR DOORS AND 3' FROM SIDES.
4. CUT OFF ALL CONDUITS 6" ABOVE BOTTOM OF BOX AND CAP.
5. DO NOT FILL INTERIOR OF BOX WITH SOIL.
6. SOD MAY BE REQUIRED AROUND PAD TO PREVENT SOIL EROSION.
7. WEIGHT IS APPROXIMATELY 3500 LBS.

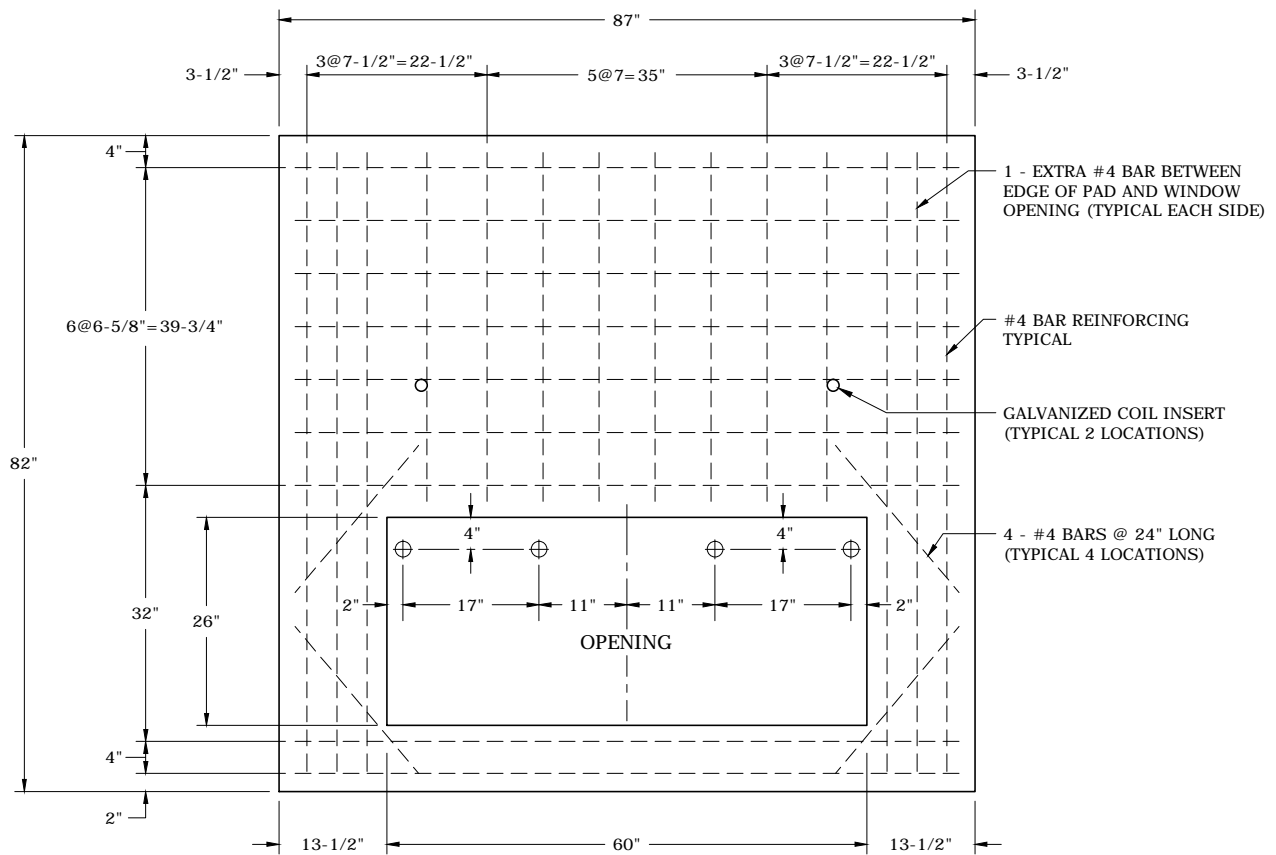
3				
2				
1				
0	10/4/10	DANNA	GUINN	ELKINS
REVISED	BY	CK'D	APPR.	

MOUNTING BOX FOR 15 KV, 12.5 KA,  
VISTA AND NEXT GENERATION VISTA

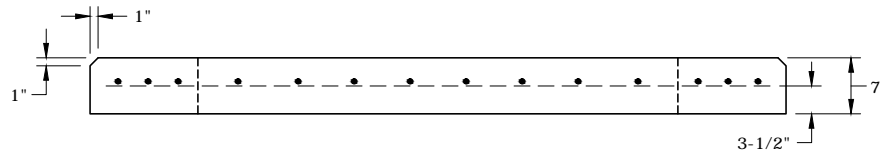


**FLA**

DWG.  
24.05-09



PLAN VIEW



SIDE VIEW

NOTES:

1. THE GROUND SHALL BE LEVELED AND THOROUGHLY COMPACTED BEFORE PAD IS INSTALLED.
2. USE FIRE ANT CONTROL UNDER ENTIRE PAD INCLUDING PAD OPENINGS.
3. MAINTAIN 10' CLEARANCE FROM FRONT AND REAR DOORS AND 3' FROM SIDES.
4. SOD MAY BE REQUIRED AROUND PAD TO PREVENT SOIL EROSION.

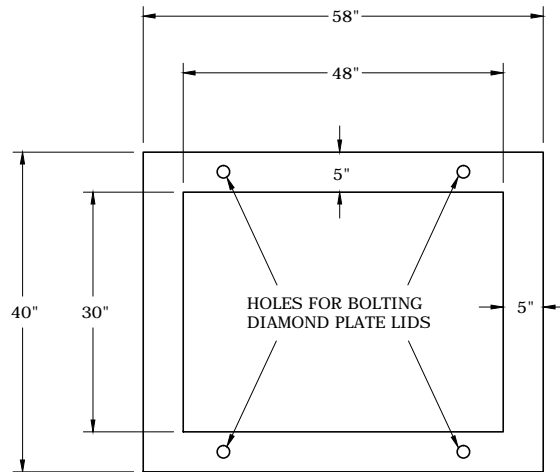
3				
2				
1				
0	5/24/12	DANNA	BURLISON	ELKINS
REVISED	BY	CK'D	APPR.	

CABLE AND CONDUIT PLACEMENT  
FOR TRAYER ATS VFI



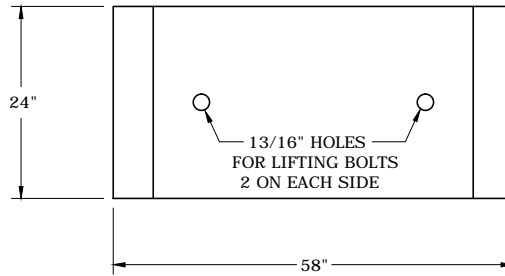
FLA

DWG.  
24.05-11



TOP VIEW

CN 320185  
 APPROXIMATE WEIGHT - 1,780 LBS.  
 PBSPSMNOLID



SIDE VIEW

NOTES:

1. LIDS ARE DIAMOND PLATE (CN 320189) OR CONCRETE (CN 320188).
2. USE 1/0 PRIMARY - THREE-PHASE CONDUCTOR MAXIMUM.
3. NO PULLING EYES.
4. NO BOTTOM.
5. FOUR (4) HOLES (2 ON EACH SIDE) FOR LIFTING BOX.
6. BELOW GRADE INSTALLATION REQUIRES ELECTRONIC POWER MARKER.
7. SEE DWG. 24.07-03 FOR LIDS.
8. DO NOT FILL INTERIOR OF BOX.

3				
2				
1				
0	8/10/10	DANNA	GUINN	ELKINS
REVISED	BY	CK'D	APPR.	

SMALL PULL & SPLICE BOX  
 (30" X 48" X 24")

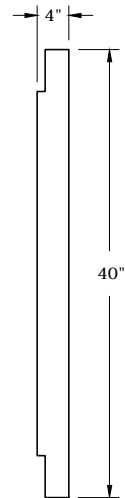
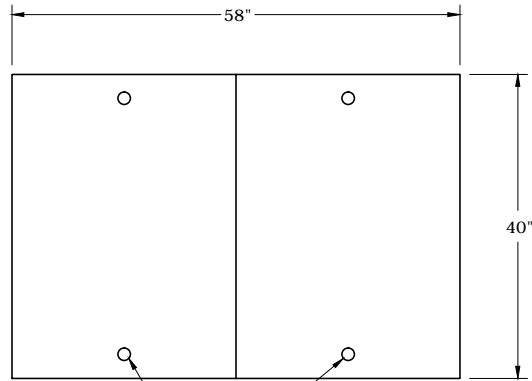


**FLA**

DWG.  
 24.07-01

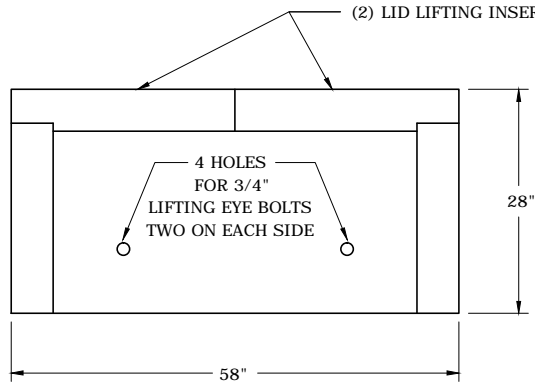
CONCRETE LID

CN 320188  
(INCLUDES TWO PIECES)  
CU LID30X48CF



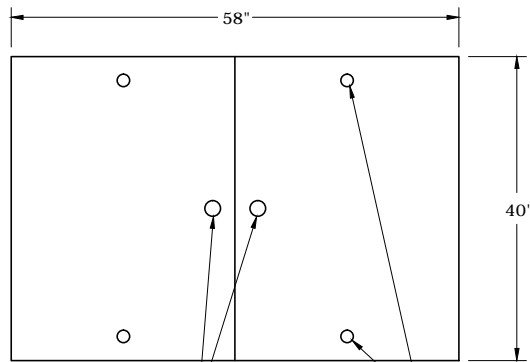
HOLES FOR BOLTING  
TO BOX

(2) LID LIFTING INSERTS



GALVANIZED LID

CN 320189  
(INCLUDES TWO PIECES)  
CU LID30X48SF



(2) 1" LID LIFTING HOLES

HOLES FOR BOLTING TO BOX

NOTES:

- LID MUST BE SECURED TO BOX USING 1/2" X 1" STAINLESS STEEL BOLTS.

3				
2				
1				
0	10/4/10	DANNA	GUINN	ELKINS
REVISED	BY	CK'D	APPR.	

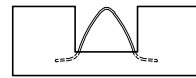
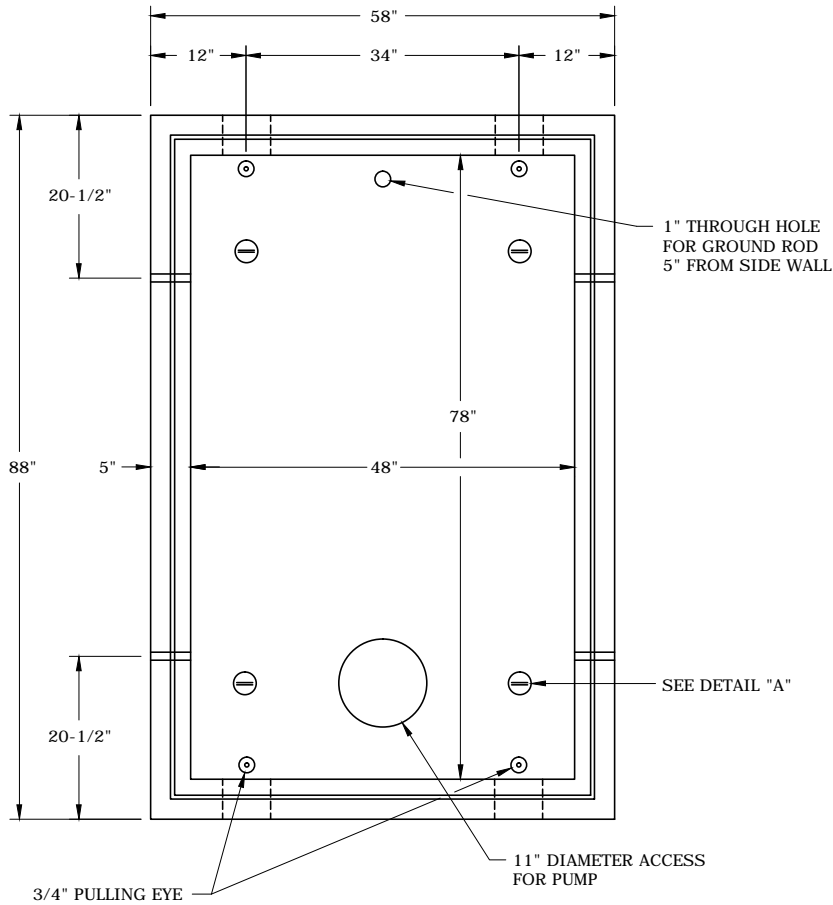
LIDS FOR SMALL PULL & SPLICE BOX



**FLA**

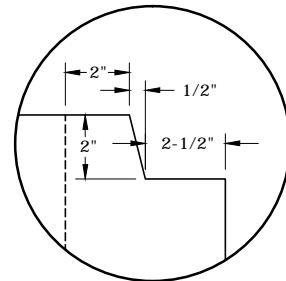
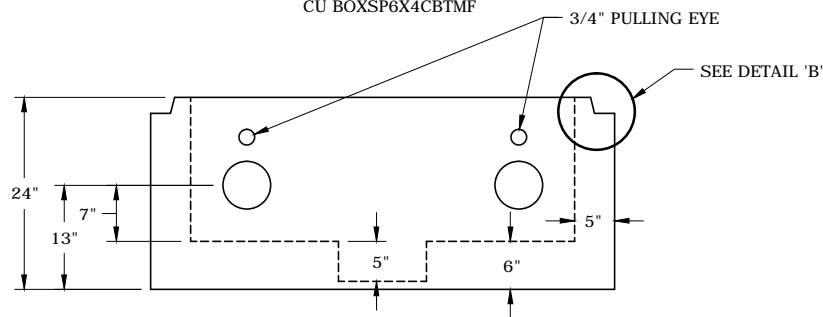
DWG.  
24.07-03





**DETAIL "A"**  
LIFTING EYE

**PLAN VIEW**  
CN 320181  
CU BOXSP6X4CBTMF



**DETAIL "B"**  
SHIPLAP GROOVE

**SIDE VIEW**

**NOTES:**

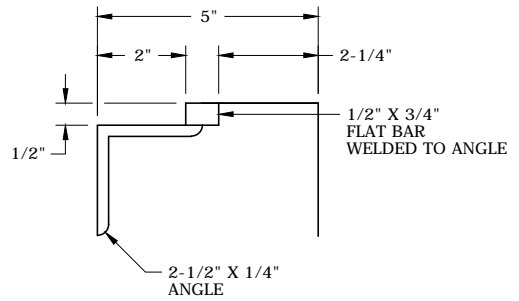
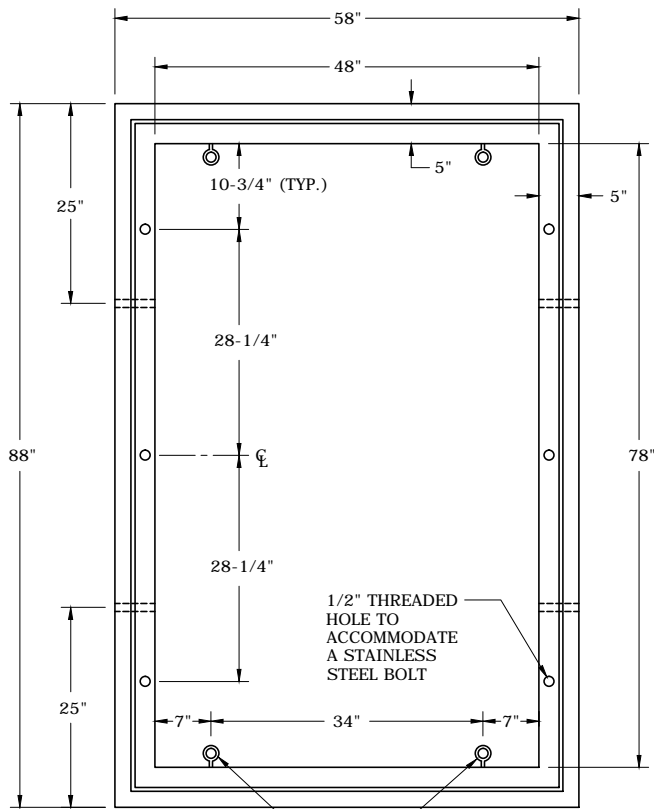
1. FOR ASSEMBLY, SEE DWG. 24.07-15.

3				
2				
1				
0	10/4/10	DANNA	GUINN	ELKINS
REVISED	BY	CK'D	APPR.	

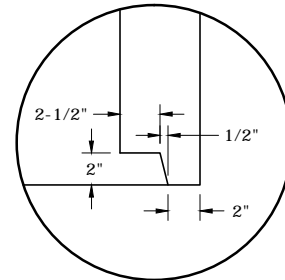
**LARGE PULL BOX, BOTTOM HALF**  
(6.5' X 4' X 2')



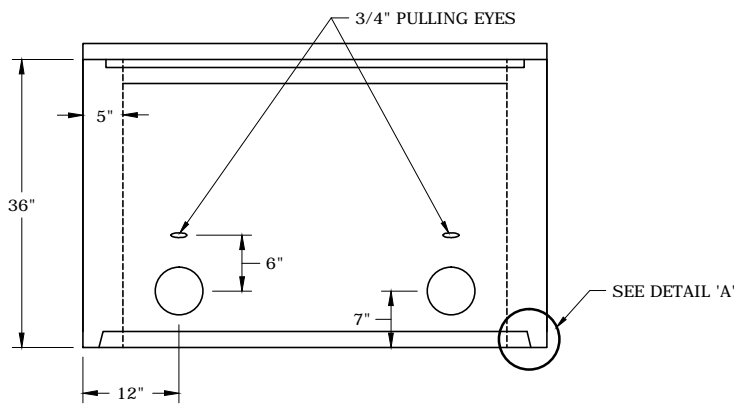
**FLA** DWG. 24.07-07



**PLAN VIEW**  
CN 320182  
CU BOXSP6X4CTOPF



**DETAIL 'A'**  
SHIPLAP GROOVE



**SIDE VIEW**

**NOTES:**

1. FOR ASSEMBLY, SEE DWG. 24.07-15.

3				
2				
1				
0	10/4/10	DANNA	GUINN	ELKINS
REVISED	BY	CK'D	APPR.	

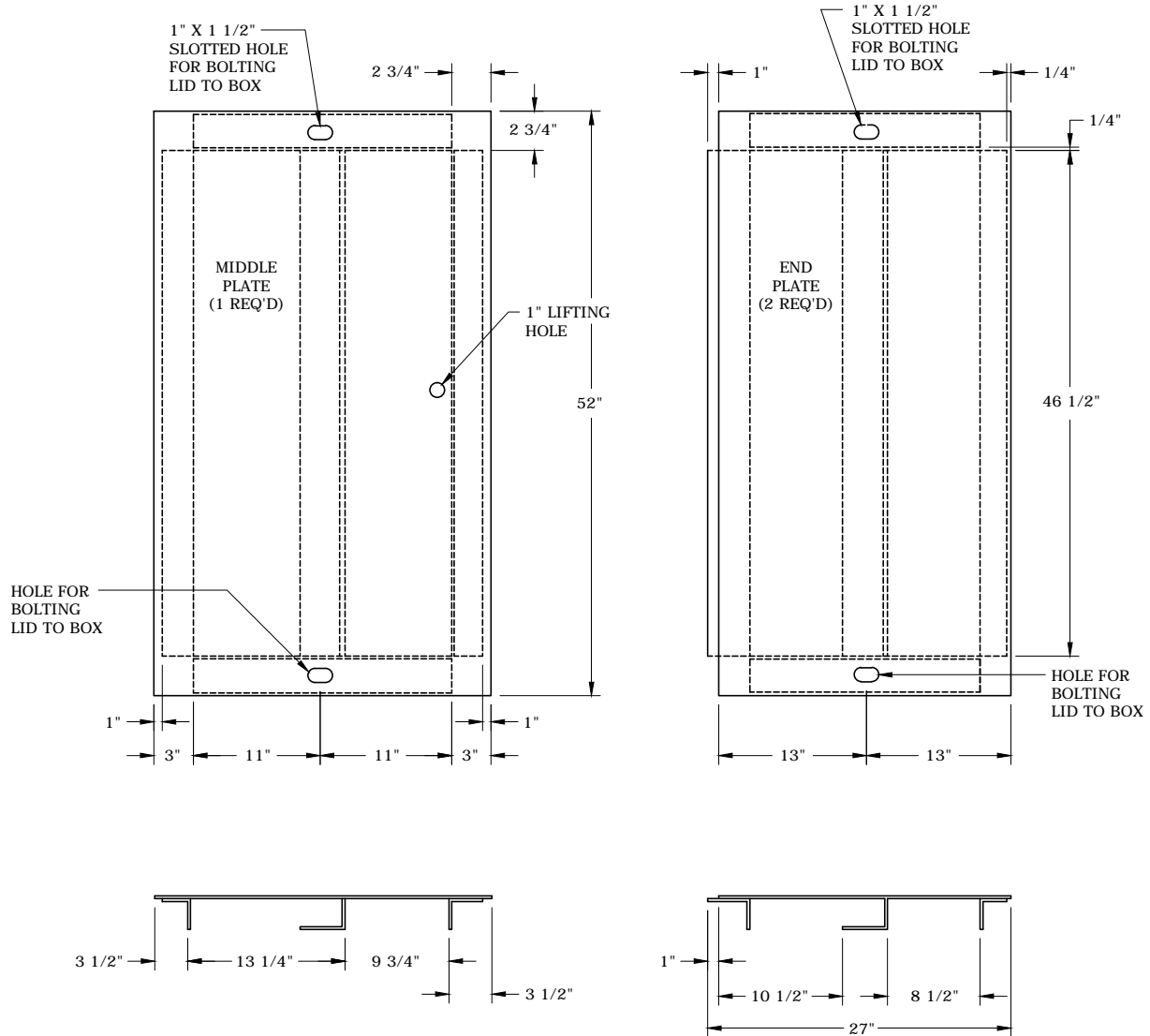
LARGE PULL BOX, TOP HALF  
(6.5' X 4' X 3')



**FLA**

DWG.  
24.07-09

CN 320186  
 CU LID6X4SF



**NOTES:**

1. LID MUST BE SECURED TO BOX USING 1/2" X 1" STAINLESS STEEL BOLTS.

3				
2				
1				
0	10/4/10	DANNA	GUINN	ELKINS
REVISED	BY	CK'D	APPR.	

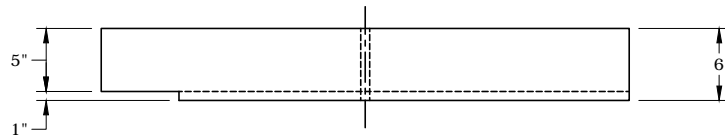
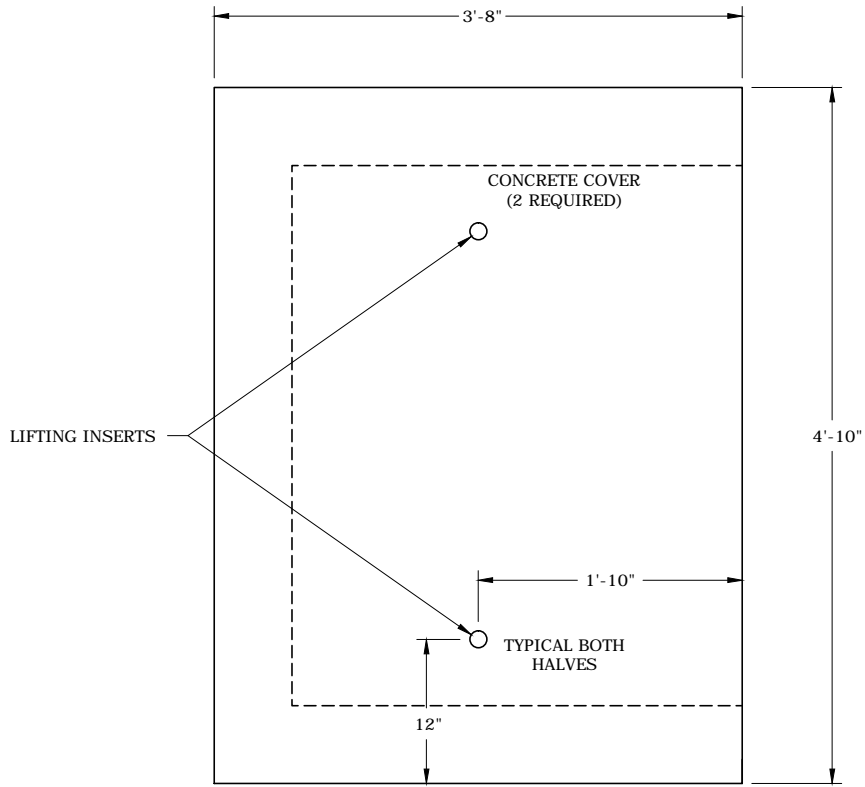
STEEL LIDS FOR LARGE PULL BOX



**FLA**

DWG.  
 24.07-11

CN 320187  
 CU LID6X4CF



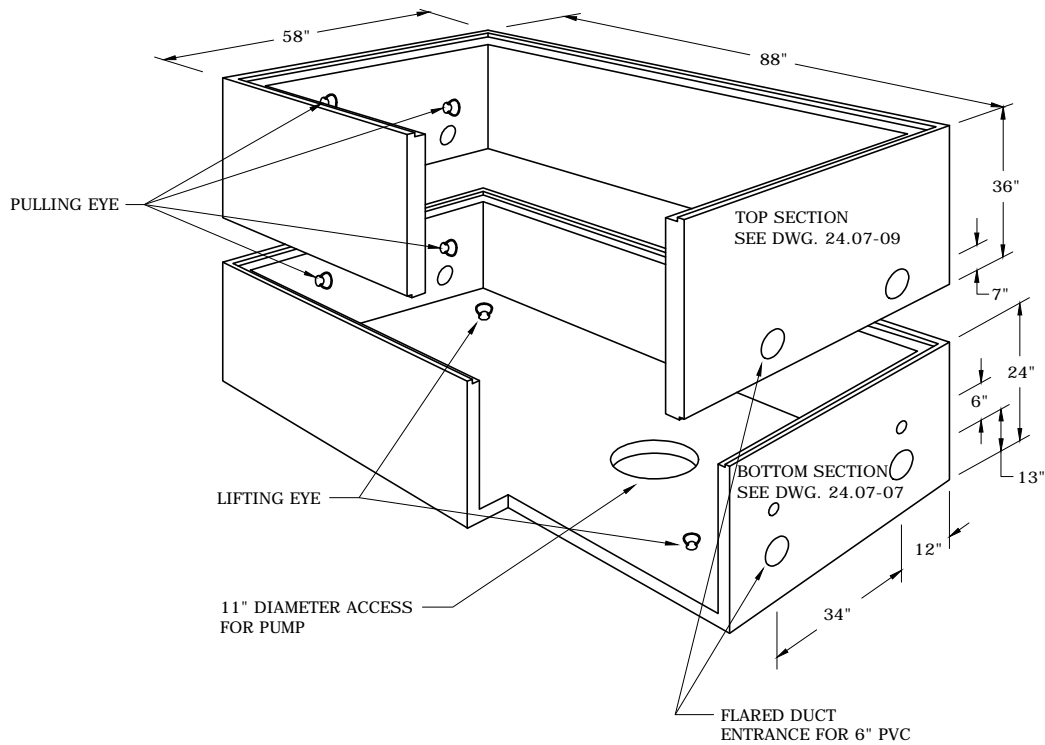
3				
2				
1				
0	8/10/10	DANNA	GUINN	ELKINS
REVISED	BY	CK'D	APPR.	

CONCRETE LIDS FOR LARGE PULL BOX



FLA DWG. 24.07-13

TOP HALF WEIGHT - 4100 LBS.  
 BOTTOM HALF WEIGHT - 5000 LBS.



**NOTES:**

1. BOTTOM OF PULL BOX SHOULD BE LIFTED USING LIFTING EYES THAT ARE LOCATED ON THE FLOOR OF THE BOTTOM SECTION.
2. WHEN SETTING TOP SECTION, USE PULLING EYES THAT ARE LOCATED ON THE END WALLS.
3. LISTED BELOW ARE OPTIONS REGARDING LID TYPES. THE 6.5 FT. X 4 FT. PULLBOX HAS THREE AVAILABLE LID OPTIONS.
  - 3 - PIECE STEEL LID USED FOR NON-TRAFFIC RATED APPLICATION ( CN 320186). FOR USE WITH STANDARD TOP SECTION ( CN 320182) AND BOTTOM SECTION ( CN 320181).
  - 3 - PIECE HEAVY DUTY NON-IMPACT TRAFFIC RATED STEEL LID ( CN 300406), WHICH MUST BE USED WITH TOP SECTION ( CN 320180) AND STANDARD BOTTOM SECTION ( CN 320181).
  - 2 - PIECE HEAVY DUTY NON-IMPACT TRAFFIC RATED CONCRETE LID ( CN 320187). THIS LID HAS A BRUSHED CONCRETE FINISH AND CAN BE USED IN SIDEWALK APPLICATIONS. FOR USE WITH STANDARD TOP SECTION ( CN 320182) AND BOTTOM SECTION ( CN 320181).
4. NON-IMPACT TRAFFIC RATED IS FOR APPLICATIONS WHERE BOX AND LID WILL BE IN AREAS OF INCIDENTAL TRAFFIC ONLY (I.E. DRIVEWAYS, PARKING LOTS). IT IS NOT RATED FOR INSTALLATION IN ROADWAYS.
5. BELOW GRADE INSTALLATION REQUIRES ELECTRONIC POWER MARKER.
6. THE TOP AND BOTTOM SECTIONS SHALL BE INSTALLED FOR ALL INSTALLATIONS. THIS IS TO ENSURE THAT THE INSTALLATION MEETS ALL TRAFFIC RATINGS, CONDUIT IS AT STANDARD DEPTH AND PULLING EYES ON BOTTOM SECTION CAN BE USED FOR CABLE PULLING APPLICATIONS.  
**EXCEPTION:** TOP SECTIONS ONLY WITH LIDS CAN BE INSTALLED FOR NON-TRAFFIC RATED INSTALLATIONS WHERE PHYSICAL CONSTRAINTS DO NOT ALLOW FOR THE ADDITIONAL SPACE OF THE BOTTOM SECTION.

3				
2				
1				
0	10/4/10	DANNA	GUINN	ELKINS
REVISED	BY	CK'D	APPR.	

**LARGE PULL BOX ASSEMBLY**



**FLA**

DWG.  
24.07-15